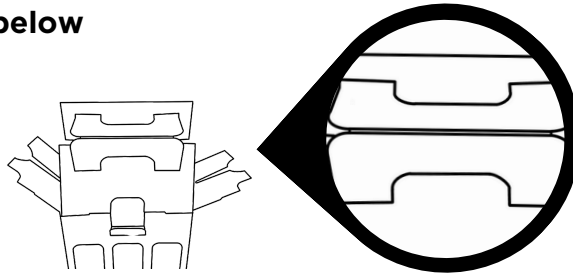


6X330/440ML CAN GIFT BOX WITH FOLDABLE HANDLE

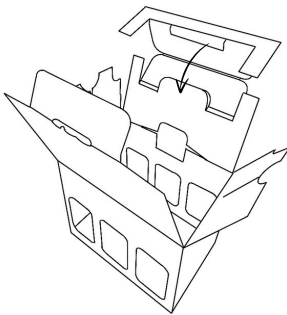
**BEER
BOX
SHOP**
.CO.UK

Once box is popped open using crack lock base, follow the instructions below

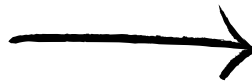


Ensure the handle is folded at both creases to maximise quality

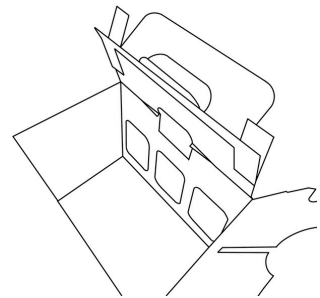
1



Fold handle into place by inserting the tab into the gap to create your handle



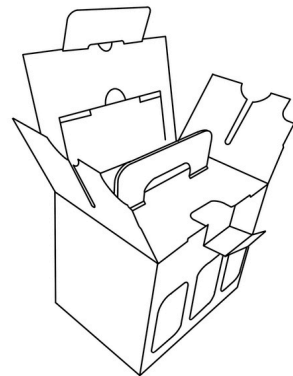
2



Fold the handle into the middle of the boxes so that the handle is facing upwards



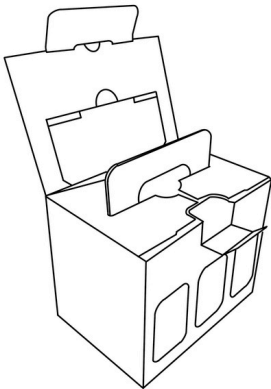
3



Fold outer flaps over so the handle slots through the gaps



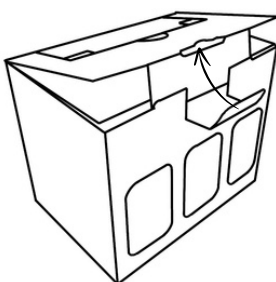
4



Push over the handle towards the back of the box. Then close the lid and insert tabs into correct places



5



Either keep the box cubed or lift up the flap to reveal your handle



6

